

LOOK



watch by ASPREY



cigar holder by ASPREY



weekender by DOLCE & GABBANA

runway shot by DOLCE & GABBANA courtesy of Neiman Marcus



leather dress shoe by PRADA



pointed lace up by DOLCE & GABBANA



wire rim sunglasses by PRADA



band by PHILIP CRANGI



pinstripe button up by LISTE ROUGE-PARIS

On Par

Argyle moves off the golf course and away from its country club image. Choose a sweater that abandons strict patterns and incorporates deconstructed prints. Pair this with slim tailored pants and chic pointed dress shoes to leave the

LOOK



Fur trapper hat by J. MENDEL

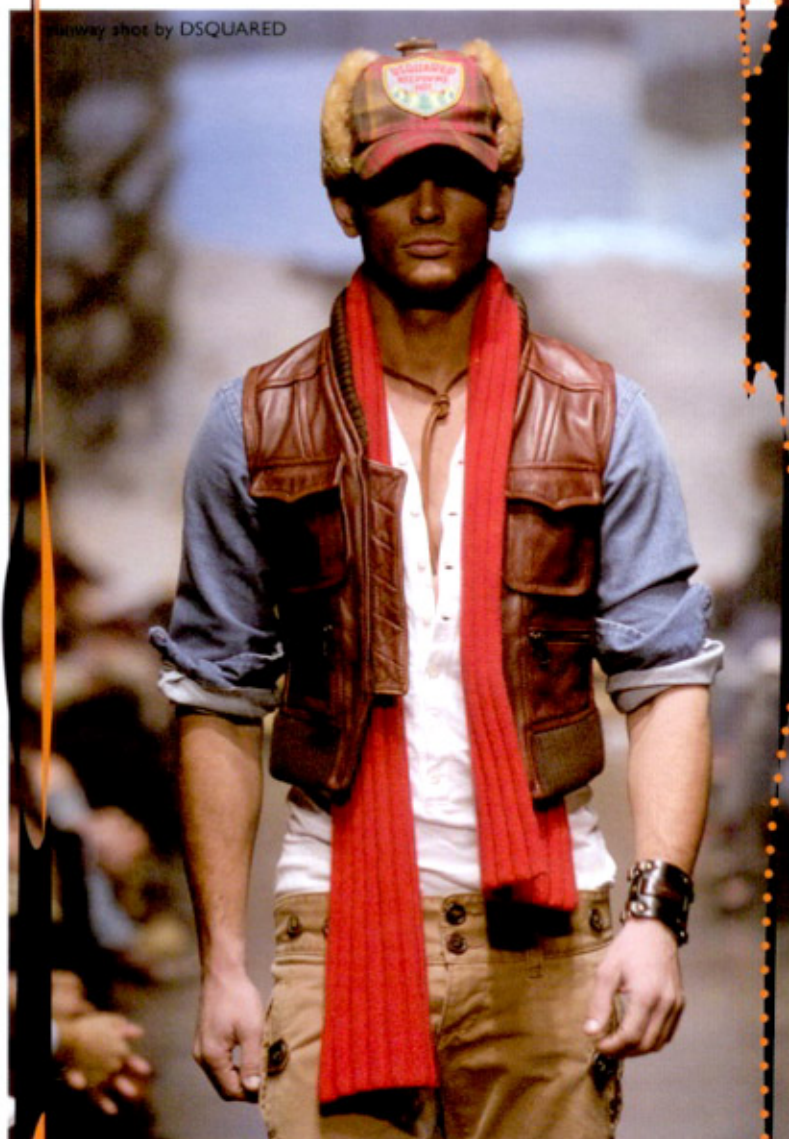


denim shirt by LISTE ROUGE-PARIS



leather cuff by DIESEL

runway shot by DSQUARED



fur lined coat by MALO



belt by DSQUARED



style sneaker by PRADA



Hunting grounds

This season couture goes outdoors taking hunting out of the woods and onto the runway. Fur takes its original form turning fashion functional. Otherwise mundane plaids are cut into form fitting tops and paired with denim and vintage tees, this look is hardly for the gun-shy.